

## WHAT ARE THE VARIOUS WAYS OF ACQUIRING LUXEMBOURGISH NATIONALITY?

You wish to become a Luxembourger? You have several ways of becoming Luxembourgish depending on your personal situation.

This document aims to give a simplified overview of the key points of the Luxembourgish nationality.

Only the legal texts shall be binding.

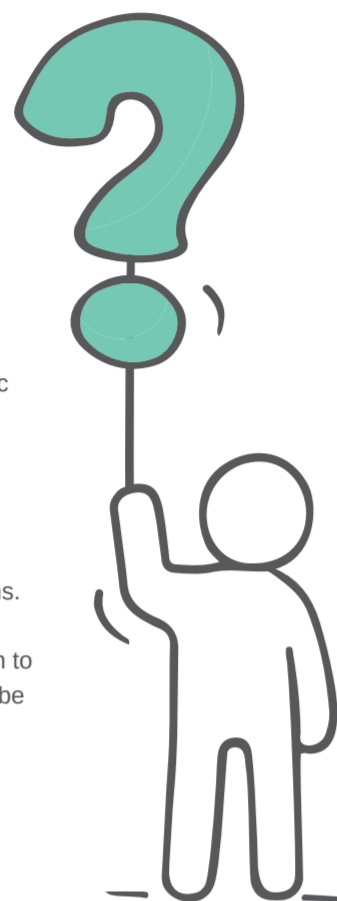
For more detailed information on the procedures, go to [guichet.lu/nationalite](http://guichet.lu/nationalite)

## RIGHTS AND OBLIGATIONS ASSOCIATED WITH LUXEMBOURGISH NATIONALITY

Do you want to play a more active role in the democratic life of the Grand Duchy of Luxembourg?

As a Luxembourgish national, you can **vote in the country's various elections and referendums**. In fact, voting is mandatory. Moreover, **only Luxembourg nationals** can vote and run for office in general elections.

In addition, while most **civil service positions** are open to nationals of EU member states, certain posts may only be held by Luxembourg nationals.



## VOLUNTARY ACQUISITION OF LUXEMBOURGISH NATIONALITY

Luxembourgish nationality can be **actively obtained, by choice**, by following one or more of the procedures below:

- naturalisation;
- option declaration procedure, applicable in 10 specific cases;
- reclamation procedure.

A decision tree has been drawn to help applicants select the procedure that best suits their personal situation.

### NATURALISATION

The procedure for acquiring Luxembourgish nationality by naturalisation is open to **persons who have resided in Luxembourg for at least 5 years**.

The person applying for naturalisation must have a certain degree of **knowledge of the Luxembourgish language** and must have **attended the "Vivre ensemble au Grand-Duché de Luxembourg" course**.

The application is then reviewed by the Ministry of Justice, which assesses whether the applicant fulfils all the necessary conditions.

### OPTION DECLARATION PROCEDURE

The option declaration procedure is a **simplified procedure** for obtaining Luxembourgish nationality.

It may find application in **10 specific cases**. Persons falling under the scope of one of these cases can initiate the option declaration procedure in order to become Luxembourgish.

If all the conditions are met (e.g. having a certain degree of knowledge of the Luxembourgish language) at the time of initiating the option declaration procedure, the applicant will **automatically** be granted Luxembourgish nationality after a period of **4 months**.



## OBTAINING LUXEMBOURGISH NATIONALITY BY OPERATION OF LAW

In this case, **Luxembourgish nationality is granted automatically**. No specific action must be undertaken to obtain Luxembourgish nationality.

### FILIATION

Children born, either in Luxembourg or abroad, to a **Luxembourgish national** are granted Luxembourgish nationality.

If the parent of a minor is granted Luxembourgish nationality, the minor automatically becomes a Luxembourgish national.

### ADOPTION

**Minors adopted by a Luxembourgish national** are granted Luxembourgish nationality.

If the parent of a minor is granted Luxembourgish nationality, the minor automatically becomes a Luxembourgish national.

### JUS SOLI (BEING BORN IN LUXEMBOURG)

#### Second generation jus soli (second generation right of soil)

Children **born in the Grand Duchy of Luxembourg** to non-Luxembourgish parents are granted Luxembourgish nationality if at least one of the **biological parents or adoptive parents was born in Luxembourg**.



#### First generation jus soli (first generation right of soil)

Children **born in Luxembourg** whose biological or adoptive parents are not Luxembourgish are granted Luxembourgish nationality when they turn **18**:

- if they resided in Luxembourg for at least 5 consecutive years immediately prior to their 18th birthday; **and**
- if one of their biological or adoptive parents resided in Luxembourg for a period of at least 12 consecutive months immediately prior to their birth (only applicable for children born after 1<sup>st</sup> July 2013).

## HAVE YOU JUST TURNED 18? (ARTICLES 6 AND 85)



You will automatically be granted Luxembourgish nationality if:



YOU WERE BORN IN LUXEMBOURG



YOU HAVE BEEN LEGALLY RESIDENT HERE ON A CONTINUOUS BASIS FOR A PERIOD OF AT LEAST 5 YEARS

**Additional condition:** for children born after 30 June 2013, one of the parents must have resided legally and on a continuous basis in Luxembourg for at least 12 months immediately prior to their birth.

To find out if you are otherwise eligible for Luxembourgish nationality as an adult, check out the decision tree!

# LAW ON LUXEMBOURGISH NATIONALITY

## KEY POINTS



LAW OF 8 MARCH 2017



## YOUR CHILD HAS JUST BEEN BORN OR YOU HAVE JUST ADOPTED THEM



### Your child is Luxembourgish if:

- ➡ One of the children's parents is a Luxembourgish national\* (article 1)
- ➡ The child or one of the parents was born in Luxembourg (article 4)
- ➡ The child was born in Luxembourg to parents who are stateless persons (articles 5.1° and 3.3°)
- ➡ The child was born in Luxembourg to non-Luxembourgish parents and is not eligible under foreign legislation to obtain the nationality of either of the parents (articles 5.2° and 3.4°)

\* If one of the parents of a minor becomes a Luxembourgish national after the child is born or adopted, the minor is also granted Luxembourgish nationality (articles 2 and 3.2°)

## CONTACT

### MINISTÈRE DE LA JUSTICE

Service de l'indigénat  
13, rue Erasme  
L-1468 Luxembourg  
Postanschrift: L-2934 Luxembourg

**Nationality Office info line:**  
8002 1000 for calls from Luxembourg (toll-free number);  
(+352) 247 88588 for calls from abroad  
Monday to Friday from 8.30 to 12.00 and from 13.30 to 17.00

**Secretariat:** (+352) 247 84547

**Certificate of nationality (Heimatschein) -** (+352) 247 84532

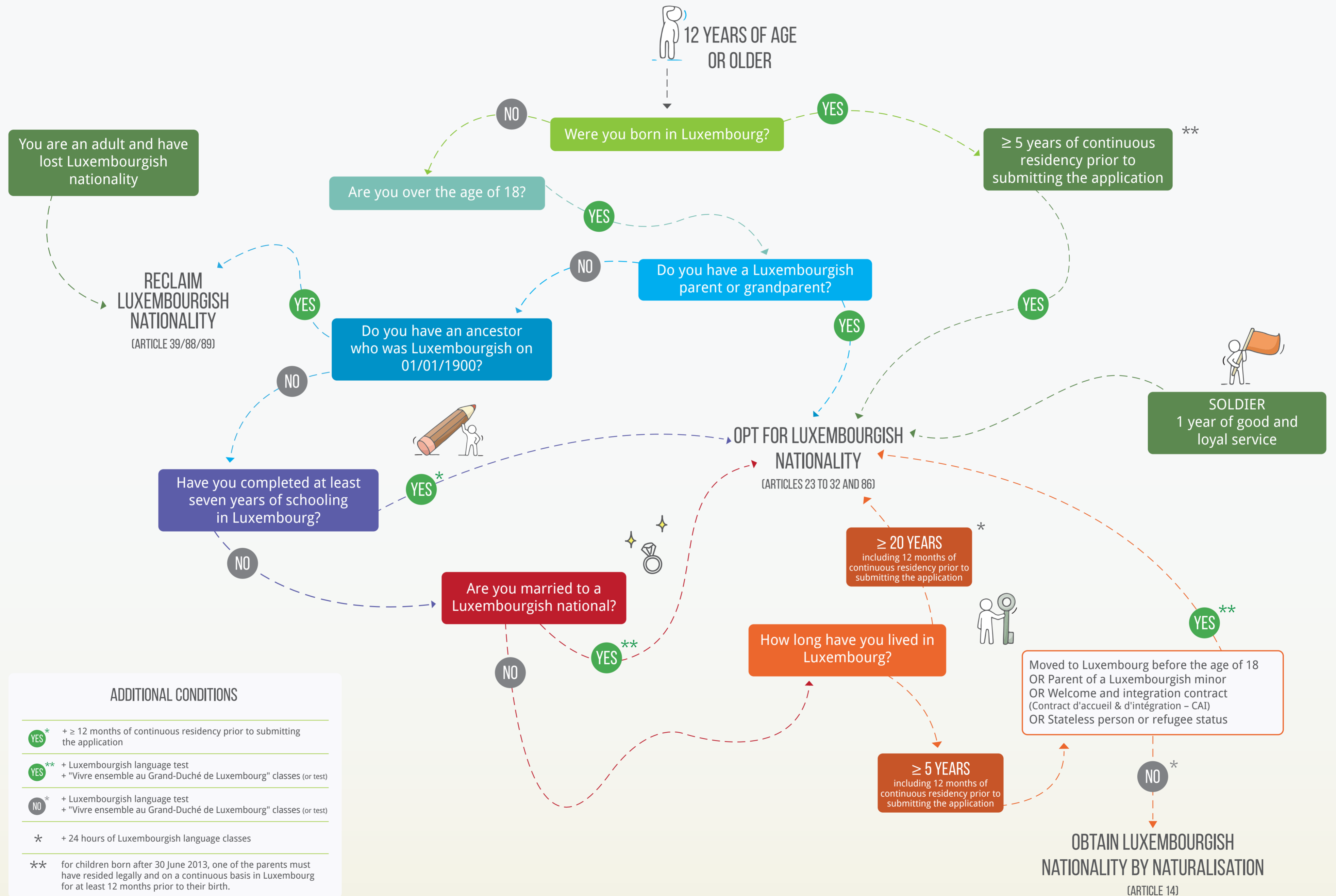
**Fax:** (+352) 26 20 27 59

[nationalite@mj.public.lu](mailto:nationalite@mj.public.lu)  
[www.mj.public.lu](http://www.mj.public.lu)

### GUICHET.LU

11, rue Notre-Dame  
L-2240 Luxembourg  
(+352) 247-82000 Monday to Friday from 8.00 to 18.00  
[www.guichet.lu/nationalite](http://www.guichet.lu/nationalite)

# CAN YOU APPLY FOR LUXEMBOURGISH NATIONALITY?



## ADDITIONAL CONDITIONS

- **YES\*** + ≥ 12 months of continuous residency prior to submitting the application
- **YES\*\*** + Luxembourgish language test  
+ "Vivre ensemble au Grand-Duché de Luxembourg" classes (or test)
- **NO\*** + Luxembourgish language test  
+ "Vivre ensemble au Grand-Duché de Luxembourg" classes (or test)
- \*** + 24 hours of Luxembourgish language classes
- \*\*** for children born after 30 June 2013, one of the parents must have resided legally and on a continuous basis in Luxembourg for at least 12 months prior to their birth.